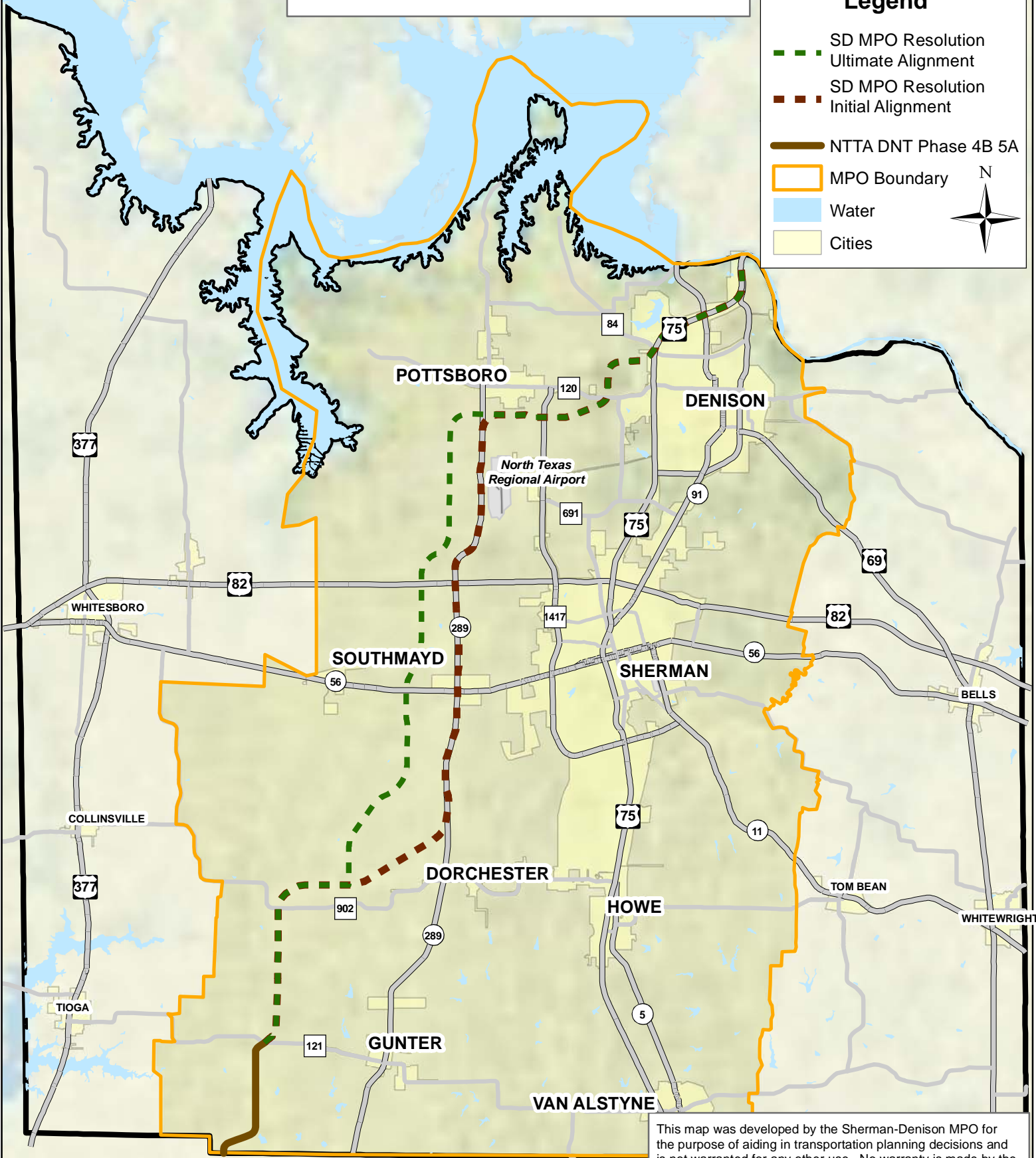


# Sherman - Denison MPO Grayson County, Texas

## Legend

- - - SD MPO Resolution Ultimate Alignment
- - - SD MPO Resolution Initial Alignment
- NTTA DNT Phase 4B 5A
- MPO Boundary
- Water
- Cities



This map was developed by the Sherman-Denison MPO for the purpose of aiding in transportation planning decisions and is not warranted for any other use. No warranty is made by the Sherman-Denison MPO regarding its accuracy or completeness. Alignments are estimates only; actual alignments may be determined at a later date.

